



SCALE: 1" = 100'



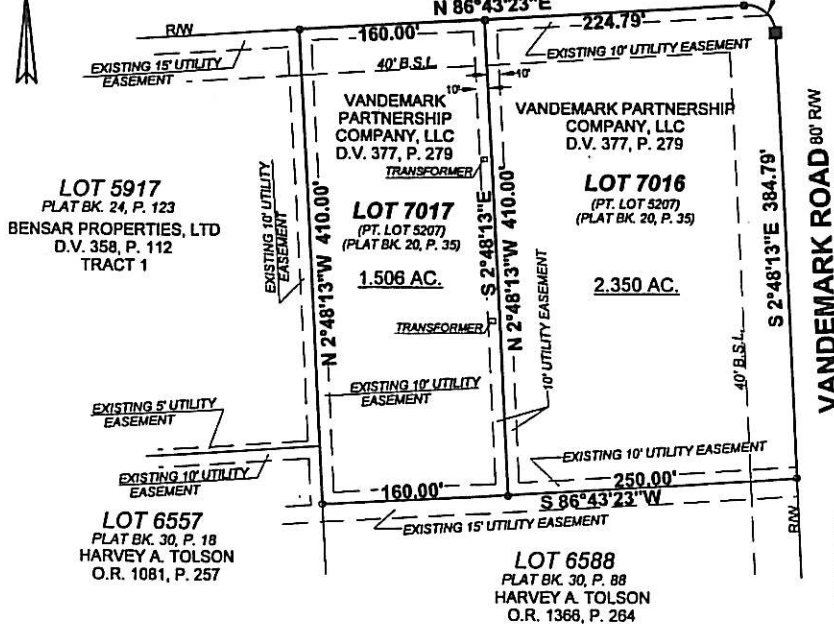
DATE: FEBRUARY 11, 2008

**NOTE:**

1. BEARINGS ARE BASED ON THE SOUTH LINE OF GLEASON STREET PER PLAT BK. 20, PAGE 35 OF THE SHELBY COUNTY PLAT RECORDS. (N-86°43'23"-E)
2. REFERENCES USED; DEED OF SUBJECT PREMISES, DEEDS OF ADJOINING PARCELS, COUNTY TAX MAP, PLAT BK. 20, P. 35, PLAT BK. 30, P. 18, PLAT BK. 30, P. 88, PLAT BK. 24, P. 123.

DELTA= 90°29'07"  
 RADIUS= 25.00'  
 ARC= 39.48'  
 CH=S-48°02'25"-E, 35.50'

**GLEASON STREET** 60' RW  
 N 86°43'23"E



**LOT 5917**  
 PLAT BK. 24, P. 123  
 BENSAR PROPERTIES, LTD  
 D.V. 358, P. 112  
 TRACT 1

**LOT 7017**  
 (PT. LOT 5207)  
 (PLAT BK. 20, P. 35)  
 1.506 AC.

**LOT 7016**  
 (PT. LOT 5207)  
 (PLAT BK. 20, P. 35)  
 2.350 AC.

**LOT 6557**  
 PLAT BK. 30, P. 18  
 HARVEY A. TOLSON  
 O.R. 1081, P. 257

**LOT 6588**  
 PLAT BK. 30, P. 88  
 HARVEY A. TOLSON  
 O.R. 1368, P. 264

**LEGEND**

- = IRON BAR.....FOUND
- ⊕ = IRON PIPE.....FOUND
- = MAG NAIL.....SET
- = 5/8"x30" IRON RE-BAR WITH YELLOW PLASTIC CAP STAMPED "EDWARDS PS 4792 PS 7574".....SET at grade

**FILED**

MAR 20 2008

DENNIS J. YORK  
 SHELBY COUNTY AUDITOR  
 BY *[Signature]*

**LOTS 7016 AND 7017**  
 BEING A REPLAT OF LOT 5207  
**CITY OF SIDNEY**  
**CLINTON TOWNSHIP**  
**SHELBY COUNTY, OHIO**  
 SECTION 27, TOWNSHIP 8-N, RANGE 6-E

**CITY OF SIDNEY PLANNING COMMISSION**

THIS PLAT WAS INSPECTED AND APPROVED BY US THIS 17<sup>th</sup> DAY OF March 2008.

*[Signature]*  
 CHAIRPERSON

**CITY OF SIDNEY COUNCIL**

THIS PLAT WAS INSPECTED AND APPROVED BY US THIS 24<sup>th</sup> DAY OF Mar. 2008.

*[Signature]*  
 CLERK

*[Signature]*  
 MAYOR

**PLAT AUTHORIZATION AND DEDICATION**

VANDEMARK PARTNERSHIP COMPANY, LLC, THE OWNER OF THE LAND INCLUDED IN THIS PLAT HAVE CAUSED THE AREA LOCATED IN THE CITY OF SIDNEY, OHIO, ENCOMPASSED BY THIS PLAT, TO BE SURVEYED, PLATTED, AND KNOWN AS THE SUBDIVISION OF LOT NUMBER 5207 AND HEREBY DEDICATE THE EASEMENTS SHOWN ON THIS PLAT TO THE PUBLIC USE FOREVER.

VANDEMARK PARTNERSHIP, AN OHIO GENERAL PARTNERSHIP  
 Limited Liability Company  
 BY: *[Signature]*  
 GREGORY J. THOMAS, ITS AUTHORIZED GENERAL PARTNER  
 Member

STATE OF OHIO  
 COUNTY OF Stark

THE FOREGOING INSTRUMENT WAS ACKNOWLEDGED BEFORE ME THIS 20<sup>th</sup> DAY OF March 2008, BY GREGORY J. THOMAS, AUTHORIZED GENERAL PARTNER OF VANDEMARK PARTNERSHIP COMPANY, LLC.

*[Signature]*  
 NOTARY PUBLIC

MY CPMMISSION EXPIRES 1/27/13

300800001807  
 Filed for Record in  
 SHELBY CO OHIO  
 JODI L SIEGEL  
 03-26-2008 At 11:09 am.  
 SMALL PLAT 40.00  
 Book 31 Page 197 - 197



SURVEYED BY: *[Signature]*  
 WILLIAM D. EDWARDS  
 PROFESSIONAL SURVEYOR No. 7574  
 110 SOUTH MAIN STREET  
 URBANA, OHIO 43078  
 (937)653-6508

APPROVED BY: *[Signature]* DATE: 3/26/08  
 SHELBY COUNTY ENGINEER